



The women's sleeveless fleece jacket

Fitted XS > XXL 300 GSM

Details

- Sleeveless
- Elastic binding at neck edge, armhole and hem
- Inside back neck grosgrain loop
- Nylon coil zipper with metal puller and cord ending
- Brushed fabric with Anti piling finish on inside and outside
- Front side welt pockets with zip opening
- Inside back neck tape in recycled polyester

Composition

Shell - Polar Fleece
100% Polyester - Recycled - , 300.0 GSM
Brushed

Care

Wash similar colours together. No ironing. Close all snaps before washing. Line dry.



Country of origin

Weaving : China
Dyeing : China
Assembly : Bangladesh



Made with 100% GRS recycled polyester
Certified by Control Union
P17/000524



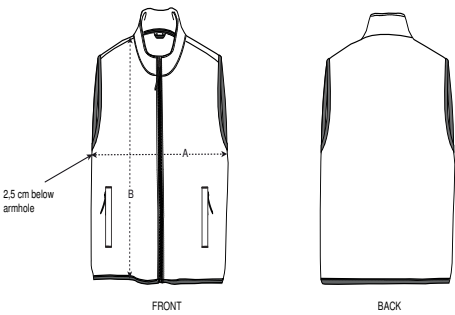
www.oeko-tex.com



Colors



Size Guide



| Sizes | | XS | S | M | L | XL | XXL |
|-------|-------------|----|----|----|----|----|-----|
| A | Half Chest | 45 | 48 | 51 | 54 | 58 | 62 |
| B | Body Length | 59 | 62 | 64 | 66 | 68 | 70 |

Packing

| Sizes | | XS | S | M | L | XL | XXL |
|------------|--|----|----|----|----|----|-----|
| Pieces/bag | | 5 | 5 | 5 | 5 | 5 | 5 |
| Pieces/box | | 15 | 15 | 15 | 15 | 15 | 15 |