



The men's fleece jacket

Medium Fit

S > 5XL*

300 GSM

Details

- Set in sleeves
- Elastic binding at neck edge, cuffs and hem
- Inside back neck grosgrain loop
- Nylon coil zipper with metal puller and cord ending
- Brushed fabric with Anti piling finish on inside and outside
- Front side welt pockets with zip opening
- Inside back neck tape in recycled polyester

Composition

Shell - Polar Fleece
100% Polyester - Recycled - , 300.0 GSM
Brushed

Care

Wash similar colours together. No ironing. Close all snaps before washing. Line dry.



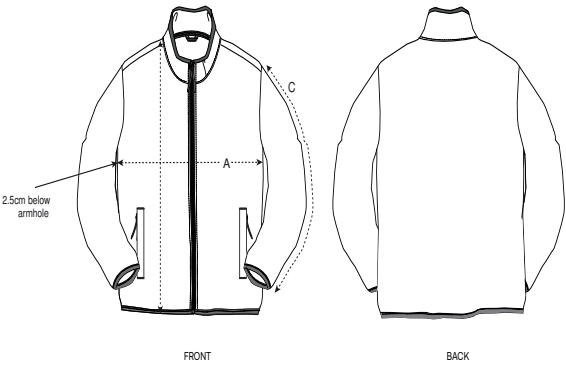
Country of origin

Weaving : China
Dyeing : China
Assembly : Bangladesh

Colors



Size Guide



Sizes		S	M	L	XL	XXL	3XL	4XL	5XL
A	Half Chest	53	56	59	62	66	70	75	80
C	Sleeve Length	63.5	65	66.5	68	69.5	69.5	69.5	69.5
B	Length	70	72	74	76.5	78.5	81	82	83

Packing

Sizes		S	M	L	XL	XXL	3XL	4XL	5XL
Pieces/bag		5	5	5	5	5	5	5	5
Pieces/box		10	10	10	10	10	10	10	10