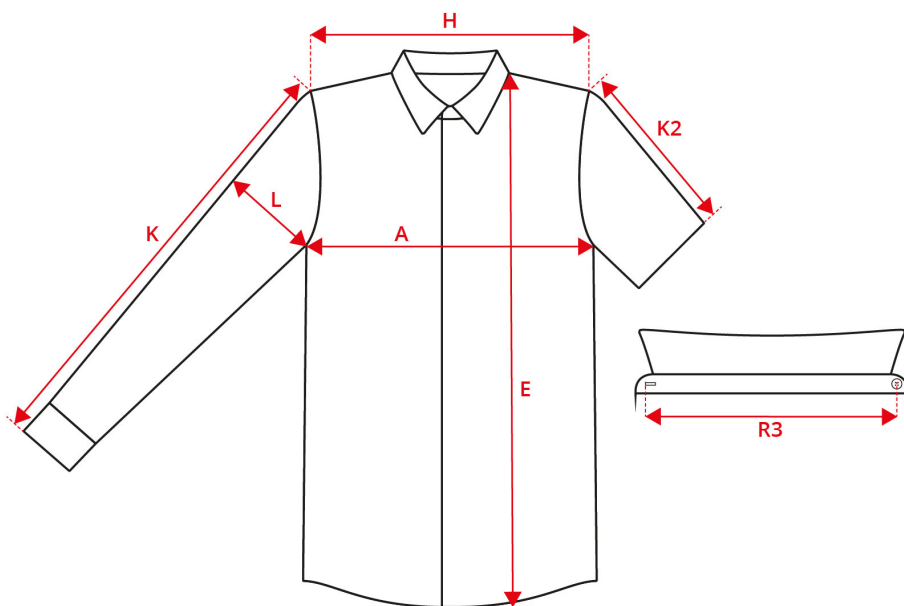


NO. S66 SEVEN SEAS Poplin | stretch



Description (measured in cm)	S	M	L	XL	2XL	3XL	4XL
A: ½ Chest width	52.5	55.5	58.5	62.5	66.5	70.5	74.5
E: Front length from high point shoulder	76	77	79	80	82	83	85
H: Shoulder to shoulder	47	48.5	50	52	54	56	58
K: Sleeve length - long	63.7	64.2	64.7	65.2	65.7	66.2	66.7
L: ½ upper arm width	20.5	21.25	22	22.75	23.5	24.25	25
R3: Collar circumference	38	40	42	44	46	48	50

How to measure



Tolerance in cm

A	E	H	K	K2	L	R3
1.5	1.5	1.5	1.5	1	1	1.5

The measurements in a product measurement chart refer to measurements made directly on the clothing. Lay the garment out flat on an even surface without stretching it. Take the measurements as shown by the arrows and select the size that fits. Use a tape measure for the best results. The tolerances in the measurement chart are based on when the item is received from ID® and not after washing. We reserve the right to make mistakes and omissions in the chart. You are always welcome to contact us for further guidance on using our product measurement chart at support@id.dk or tel: +45 97492144