

MARLEY MEN

CYCLING JERSEY

PRODUCT DETAILS:

The Marley Men cycling jersey was designed with comfort in mind for both casual rides and longer cycling routes. The lightweight, breathable fabric fits the body well, providing comfort and freedom of movement during rides.

The model features a full-length zipper, making the jersey easy to put on and allowing quick ventilation adjustment during intense effort. Its ergonomic cut and elastic finishes ensure a comfortable fit while maintaining a sporty look.

On the back, there are three practical pockets, perfect for carrying a phone, energy bars, or small accessories needed during cycling. Additionally, the inner bottom hem is equipped with elastic band with a silicone strip that prevents the jersey from riding up and keeps it securely in place even during dynamic rides.

FABRIC:

100% polyester. COOL-MAX (135 g/m²):
Provides excellent thermoregulation and quick moisture wicking.

COLOR:

Sublimation



CERTYFICATIONS:

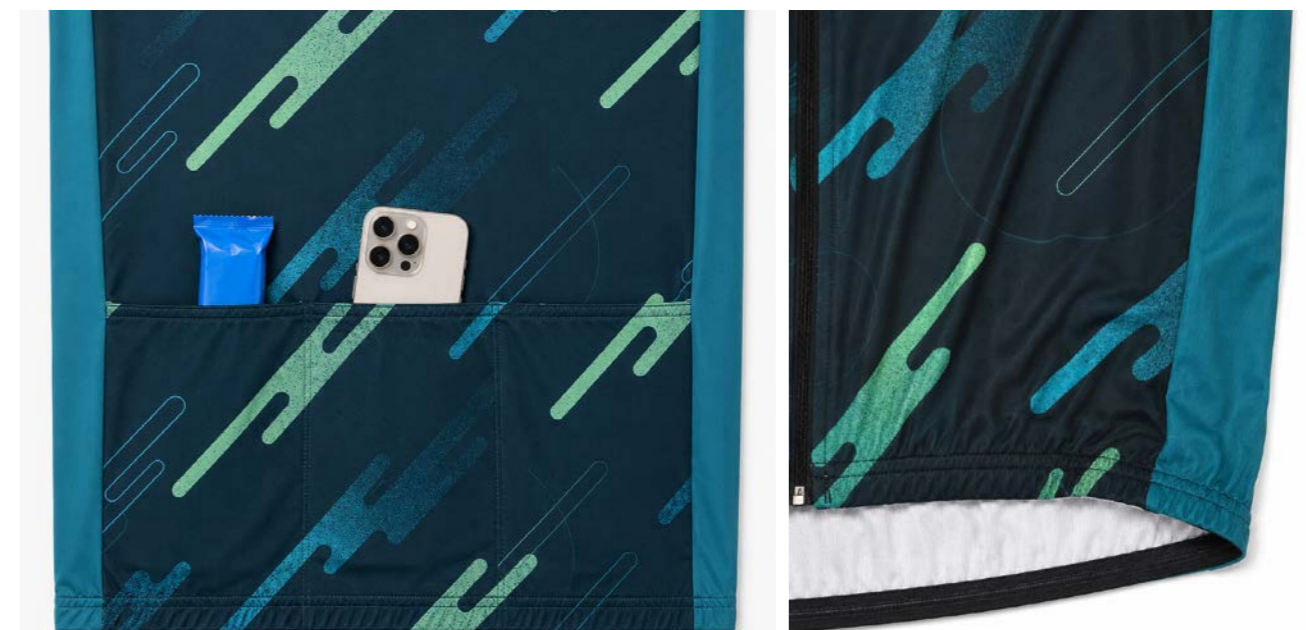
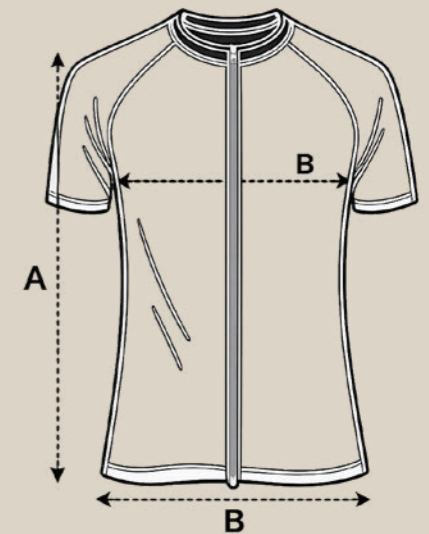


STANDARD 100

CARE INSTRUCTIONS:

TABELA ROZMIARÓW:

SIZE	WIDTH	FRONT LENGHT	BACK LENGHT	SLEEVE LENGHT
S	48	64	71	35,5
M	51	66	73	36
L	54	67,5	74,5	36,5
XL	57	69	76	37
XXL	60	71	79	37,5
XXXL	63	72	80	38
+/- 1 CM TOLERANCE				



Option to choose the zipper and elastic band color: white / black.