

MARLEY WOMEN

CYCLING JERSEY

PRODUCT DETAILS:

The Marley Women cycling jersey was designed with comfort in mind for both casual rides and longer cycling routes. The lightweight, breathable fabric fits the body well, providing comfort and freedom of movement during rides.

The model features a full-length zipper, making the jersey easy to put on and allowing quick ventilation adjustment during intense effort. Its ergonomic cut and elastic finishes ensure a comfortable fit while maintaining a sporty look.

On the back, there are three practical pockets, perfect for carrying a phone, energy bars, or small accessories needed during cycling. Additionally, the inner bottom hem is equipped with elastic band with a silicone strip that prevents the jersey from riding up and keeps it securely in place even during dynamic rides

FABRIC:

100% polyester. COOL-MAX (135 g/m²):
Provides excellent thermoregulation and quick moisture wicking.

COLORS:

Sublimation



CERTYFICATIONS:

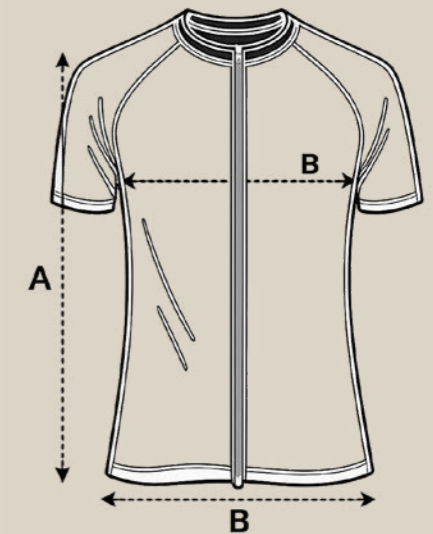
CARE INSTRUCTION:



STANDARD 100

SIZES:

SIZE	WIDTH	FRONT LENGHT	BACK LENGHT	SLEEVE LENGTH
XS	43	58	66	32,5
S	46	60	68	33
M	49	62	70	33,5
L	52	64	72	34
XL	55	66	74	34,5
XXL	58	68	76	35
+/- 1 CM TOLERANCE				



Option to choose the zipper and elastic band color: white / black.